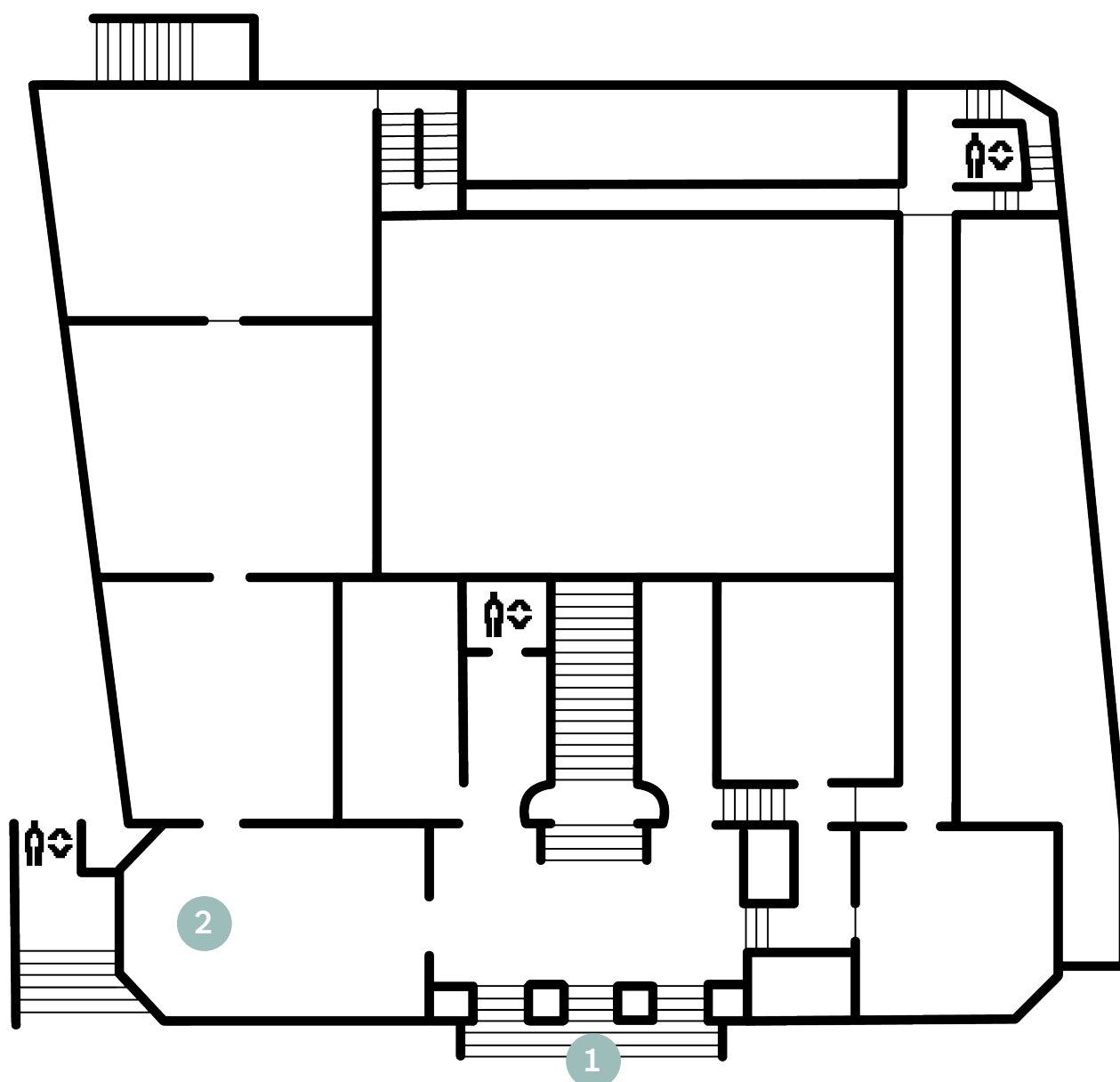


A map intended for people for whom exposure to certain content may cause a difficult emotional experience.

The map presents the location of works presented in the exhibition that may cause emotional discomfort - so-called triggers . These works deal with themes of violence, present nudity, contain vulgarities or loud noises. The information collected is intended to enable you to decide how to move around the exhibition.

level 0

1. Anna Zaradny, *BURUNDANGA*
2. Joanna Rajkowska, *Camping Jenin*





The works presented in the exhibition cannot be touched, but you can find a space to sit, lie down, take a break. Look for specially prepared and marked areas and furniture.



On Tuesdays, all video works and sound installations are presented at a lower volume to facilitate access for those sensitive to stimuli.

level 1

1. Katarzyna Kozyra, *Piramid of Animals*
2. Zbigniew Libera, *Intimate Rites*
3. Przemek Branas, *Untitled*
4. Agnieszka Polska, *Holidays with Professor*
5. Wojciech Bąkowski, *Spoken Movie 3*
6. Liliana Zeic, *Strong Sisters Told Their Brothers*
7. Katarzyna Kozyra, *Summer Tale*
8. Katarzyna Kozyra, *The Rite of Spring*

